

Sold



37 Daintree Dr, Palmview



## Near-new and Perfect Location!

Ideally located on a quiet and family-friendly street, this near-new (2022) single-level home is ready to move in and enjoy!

From the landscaped front garden, the large timber door entrance and wide feature hallway - you will instantly know that this home has been meticulously cared for.

You will love the long list of great features, including 2.55m ceilings, quality kitchen, and separate media room. This property has everything that you would expect from a modern family home, including seamless indoor/outdoor flow and open plan living and dining.

Being just steps from the new Palmview schools, it's perfect for families or those wanting a large home without the ongoing maintenance of a large garden.

🏠 4 🍷 2 🚗 2 📏

408 m2

Price SOLD for  
\$950,000

Property Type Residential

Property ID 21

Land Area 408 m2

Floor Area 167 m2

### Agent Details

Phil Wood - 0435 796 186

Arthur Huvelle - 0473 197

154

### Office Details

Woods Property Agents

Comfort and convenience are assured with a generous 167sqm of living space. All 4 bedrooms are well proportioned, with large windows allowing for plentiful natural light. All bedrooms also have ceiling fans, and robes. The master includes a walk-in robe and ensuite.

Sliding doors from the living quarters open out to the private and low-maintenance outdoor living area. The garden is fully-fenced, and boasts a covered patio that's perfect for entertaining family and friends.

Storage is ample, with an oversize double garage with internal access and a separate laundry

You will love:

- Private, landscaped and fully-fenced
- Flat 408m<sup>2</sup> allotment
- Family-friendly and quiet location
- Just steps to new Palmview Schools
- 4 large bedrooms plus media (or 5th bedroom)
- Private master with a walk-in robe and ensuite
- Generous kitchen with stone benches and butler's pantry
- 900mm Fisher & Paykel electric oven and cooktop
- Open plan living and dining with 167sqm of living space
- Split system AC and ceiling fans throughout
- 2.55m high ceilings
- Separate laundry
- Side access for convenience

Everything on your doorstep!

The desirable Village Green Estate has an exciting future with new playgrounds, a sports field and new retail all planned. This home is also walking distance to the new Palmview Schools, and has great access to the highway and local beaches.

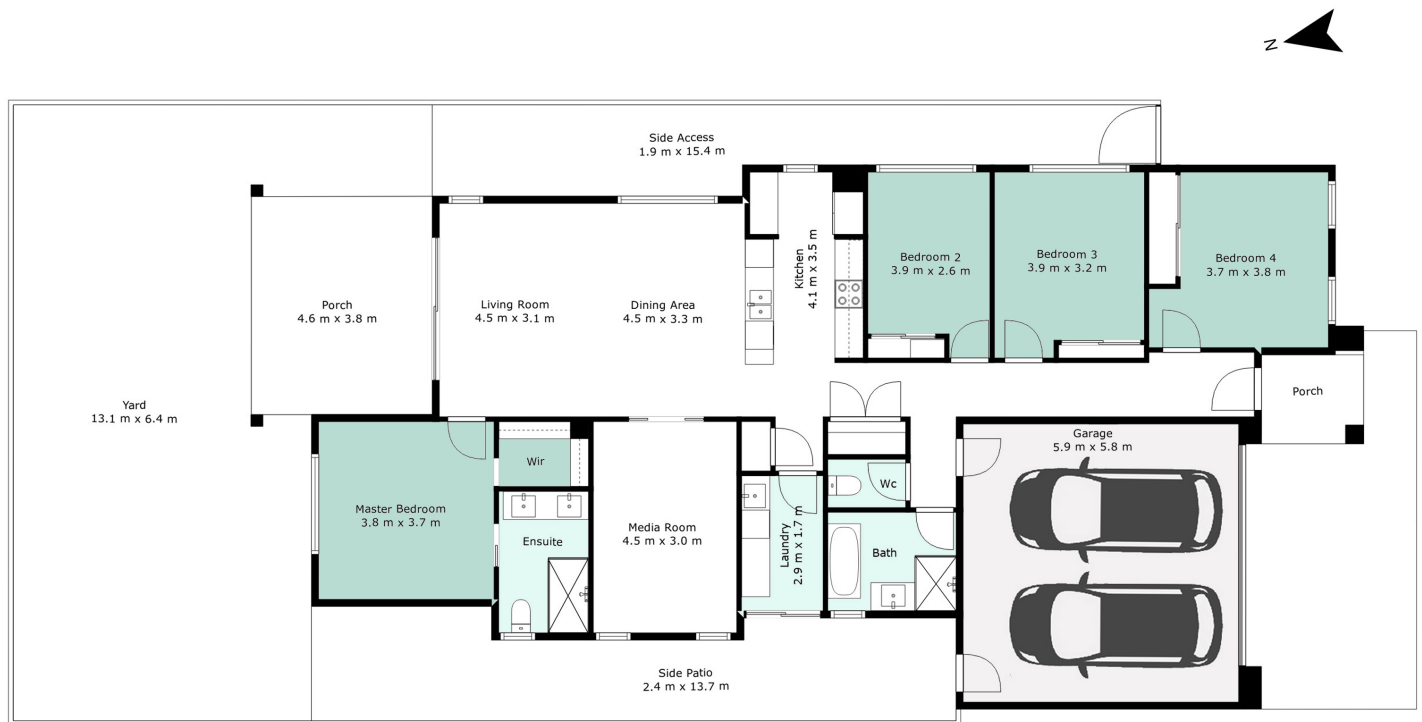
This outstanding family home will allow you enjoy the best of the Sunshine Coast lifestyle. Please contact Phil

SHOP 8 110 Sixth Ave  
Maroochydore, QLD,  
4558 Australia  
0435 796 186



Wood on 0435 796 186 with any questions.

The above information provided has been furnished to us by the vendor/s. We have not verified whether or not that information is accurate and do not have any belief in one way or the other in its accuracy. We do not accept any responsibility to any person for its accuracy and do no more than pass it on. All interested parties should make and rely upon their own inquiries in order to determine whether or not this information is in fact accurate.



37 Daintree Drive, Palmview

4 Bed 2 Bath 2 Car



**Total Living: 167m<sup>2</sup>**  
**Block Size: 408m<sup>2</sup>**

Measurements Are Calculated By Cubicasa Technology. Deemed Highly Reliable But Not Guaranteed.